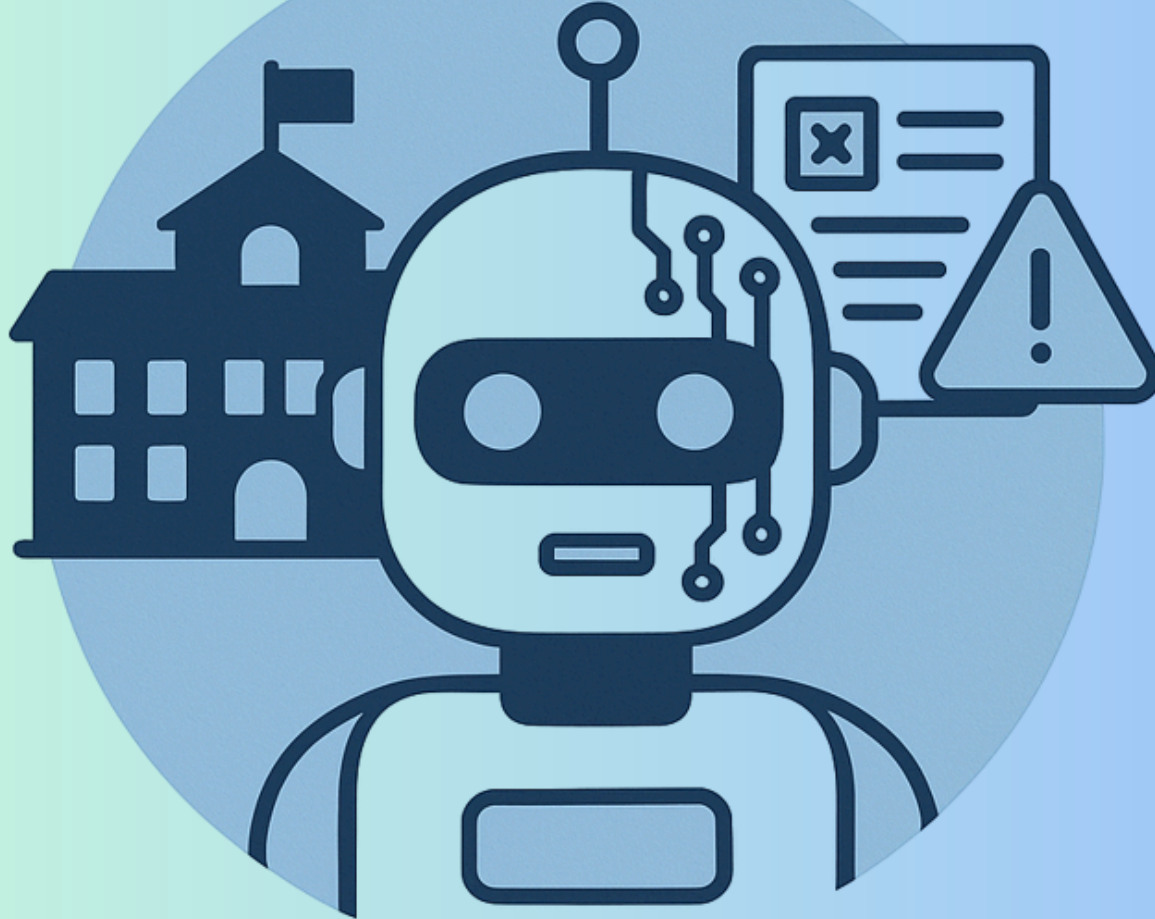




مدرسة جيمس ونشستر
GEMS Winchester School
DUBAI

RISK ASSESSMENT



**Understanding and mitigating risks associated with an AI app is essential to keeping students and staff safe.
A thorough risk assessment helps prepare for the unpredictable.**



TABLE OF CONTENT

- Canva
- Century Tech
- ChatGPT
- Craiyon
- Curipod
- Copilot
- Deepseek
- Duolingo
- Elevenlabs
- Gamma
- Gemini
- Grammarly
- MagicSchool
- Pictory
- NookbookLM
- Perplexity
- QuillBot
- Quizizz
- Teachmate



GEMS Winchester School, Dubai



Risk Assessment - Canva for Schools

Teacher champion - Ms. Mary Nell, Ms. Aaliya

USED BY TEACHERS FOR:

Creating classrooms, project based learning, and collaborative projects.



USED BY STUDENTS FOR:

Poster making, infographic assignments, collaborative class projects, and digital storytelling.



PURPOSE

Canva for Education is a design platform tailored for classroom use, offering templates and tools to create presentations, posters, infographics, and other visual content.



DATA RISK

Medium. Canva requires account creation (with email). Uploading images, personal work, or using AI features like "Text to Image" may introduce risks if not supervised.



ETHICAL RISK

Medium. Potential for misuse (e.g., inappropriate designs, unauthorised image use, AI hallucinations in generated text).



RISK MITIGATION

Encourage supervised use during design activities. Enable content filters and restrict external search access in settings. Guide students on ethical use of AI-generated content and attribution.



RECOMMENDATION

Use education domain sign-ins to create closed, secure classrooms. Teachers should pre-approve templates for primary students.



GEMS Winchester School, Dubai

Risk Assessment - CenturyTech for Schools

Teacher champion - Ms. Alicia



USED BY TEACHERS FOR:

Setting home learning tasks called 'nuggets' for students to complete.
Analysing data to inform lesson planning.

USED BY STUDENTS FOR:

Personalised learning with AI.
Completing 'nuggets' and receiving feedback.
Completing challenge questions.



PURPOSE

AI-powered learning platform that offers personalised pathways in maths, science, and English. It uses adaptive algorithms to identify gaps in student knowledge and tailor content accordingly.



DATA RISK

Medium. Century Tech collects and processes personal and academic performance data to inform how best to support and challenge each individual student.



ETHICAL RISK

Low to medium. The platform's personalisation algorithms may reinforce existing learning gaps if not monitored, and over-reliance on AI-recommended content might limit exploratory learning.



RISK MITIGATION

Ensure robust data sharing agreements are in place with the vendor. Provide orientation for staff and students on how AI decisions are made. Use multi-factor authentication and restrict external integrations.



RECOMMENDATION

Ensure teachers are regularly reviewing student progress dashboards to identify gaps in learning and inform planning.



GEMS Winchester School, Dubai

Risk Assessment - ChatGPT for Schools

Teacher champion - Ms. Swati, Ms. Aysha



USED BY TEACHERS FOR:
generating Educational resources

USED BY STUDENTS FOR:
Used by students aged 13+
for researching topics, brainstorming ideas,
summarizing texts



PURPOSE

AI chatbot developed by OpenAI that generates human-like responses based on user input. It can support a wide range of educational uses including writing support, content generation, coding help, and critical thinking exercises



DATA RISK

Medium to High. the free version may log inputs for model improvement and use GPT data to train models unless settings are changed. Users are warned not to input personal or sensitive data.



ETHICAL RISK

High. ChatGPT can produce biased, factually incorrect, or misleading information. Without proper oversight, students may misuse the tool for plagiarism, cheating, or accessing inappropriate content.



RISK MITIGATION

Use the tool in guided sessions with clear objectives and supervision. Educate students on responsible use, citing AI-generated content, and cross-checking facts. use enterprise/education-managed access where possible.



RECOMMENDATION

Disable chat history and memory in settings when appropriate for privacy protection. In data controls set "improve the model for everyone."



GEMS Winchester School, Dubai

Risk Assessment - Craiyon for Schools

Teacher champion - Ms. Swati



USED BY TEACHERS FOR:

generating images based on text prompt.



USED BY STUDENTS FOR:

generating text to image.



PURPOSE

AI image generation tool that creates visuals from text prompts. Users enter a description, and the AI produces a set of images based on learned patterns. Browser-based tool for generating images with no account needed



DATA RISK

Low to Medium. No personal account or login required, which lowers direct data risk. However, prompts are logged on the server, and there's no control over how inputs are stored or reused.



ETHICAL RISK

Medium to High. Since the platform lacks content filtering, it may generate biased, or culturally insensitive images depending on prompts. There is no age verification or educational mode. Students could be exposed to unintended or offensive visuals.



RISK MITIGATION

Avoid using Craiyon in unsupervised settings or assigning it for independent student use. Guide discussion on AI bias and responsible image creation.



RECOMMENDATION

Carefully use teacher-led demonstrations. Use screenshots rather than live site access when showing results to students.




GEMS Winchester School, Dubai



Risk Assessment - Curipod for Schools

Teacher champion - Ms. Swati, Ms. Fatima, Mr. Junaid



USED BY TEACHERS FOR:
Creating exit tickets, interactive presentations,
and lesson slides.



USED BY STUDENTS FOR:
AFL activities.



PURPOSE

Curipod is an AI-powered platform that helps teachers create polls, exit tickets, and lesson slides. Students can join live sessions via class codes and respond anonymously, with their inputs visible in real time.



DATA RISK

Low to Medium. Student responses are typically anonymous, and no login is required for them to participate in live sessions.



ETHICAL RISK

Low to Medium. AI-generated content can occasionally include inaccuracies or biased phrasing. While it promotes equitable engagement, care is needed to ensure respectful and relevant content is generated and shared.



RISK MITIGATION

Teachers should review all generated content before displaying it. Set ground rules for respectful participation. Monitor student inputs during live sessions and use moderation tools.



RECOMMENDATION

Brainstorming, exit tickets, whole-class discussions, formative. Teachers to use Open ended activity for generating insights during AFL activity.



GEMS Winchester School, Dubai

Risk Assessment - Copilot for Schools

Teacher champion - Mr. Abraham, Ms. Fatima



Copilot

USED BY TEACHERS FOR:

writing summaries, generating presentations, or analysing data in spreadsheets.

USED BY STUDENTS FOR:

drafting content, summarizing documents, analyzing data.



PURPOSE

AI assistant integrated into Microsoft 365 apps such as Word, Excel, PowerPoint, and Teams. Powered by OpenAI's GPT models, Copilot assists users in drafting content, summarizing documents, analyzing data, and automating repetitive tasks.



DATA RISK

Medium.
When used in Microsoft Education environments, Copilot is subject to the data protection and compliance standards of Microsoft 365. Outside this environment, risk of exposing personal data.



ETHICAL RISK

Medium.
Copilot can generate biased or incorrect content, and students may over-rely on it for completing assignments. The tool does not inherently verify the quality or originality of outputs.



RISK MITIGATION

Use only within Microsoft 365 Education domains where student data is protected. Reinforce responsible AI use policies (e.g., for drafting only, not final submissions).



RECOMMENDATION

Teach students and staff how to critically evaluate AI-generated content.



GEMS Winchester School, Dubai

Risk Assessment - deepseek for Schools

Teacher champion - Ms. Swati, Ms. Fatima



deepseek

USED BY TEACHERS FOR:

general-purpose reasoning and programming.



USED BY STUDENTS FOR:

Not Used



PURPOSE

DeepSeek is an open-source large language model (LLM) developed primarily for research, programming, and language tasks. It supports both code and natural language generation and is often used through APIs or third-party platforms.



DATA RISK

Medium to High.
Since DeepSeek is typically accessed via third-party integrations or self-hosted platforms, the data risk varies depending on implementation.



ETHICAL RISK

Medium to High.
It can produce biased, inaccurate, or inappropriate outputs without safeguards. There are no built-in educational filters or age-gating, and the model's open-source nature allows full customisation posing ethical challenges.



RISK MITIGATION

Do not allow direct student access to raw or unfiltered versions. Add content moderation layers and prompt engineering to guide ethical outputs. Use only within vetted platforms or closed environments managed by IT staff.



RECOMMENDATION

Do not allow direct student access



GEMS Winchester School, Dubai

Risk Assessment - Duolingo for Schools

Teacher champion - Ms. Alicia



USED BY TEACHERS FOR:
Setting home learning and task on entry tasks.



USED BY STUDENTS FOR:
Progressing through levels to improve everyday use of the language.



PURPOSE

Develop writing, speaking, listening and reading skills in modern foreign languages.



DATA RISK

Medium.
Duolingo does collect and share data with third parties. However students can use anonymous features to limit this.
Students and teachers must also be aware and report any phishing attempts.



ETHICAL RISK

Medium.
Duolingo creates relevant content. Has 'mature' age-controls that teachers must enable.
Teachers must also ensure students sign up as beginners and not advanced learners of the language.



RISK MITIGATION

Teachers to periodically check usernames and remove students where necessary.



RECOMMENDATION

Use for home learning or task on entry.
Set x5 minutes/10XP for task on entry.
Set x20 minutes/50 XP for home learning.



GEMS Winchester School, Dubai

Risk Assessment - 11ElevenLabs for Schools

Teacher champion - Ms. Swati

11ElevenLabs

USED BY TEACHERS FOR:
creating engaging audio content

USED BY STUDENTS FOR:
not to be used.



PURPOSE

AI voice synthesis platform that enables users to generate lifelike voiceovers from written text. It supports multiple languages, emotions, and custom voice cloning.



DATA RISK

Medium to High.
If users clone their voice or upload audio containing student voices, personal biometric data may be stored and processed. Text-to-speech data is less sensitive, but care must be taken with what is submitted. Data may be stored on cloud.



ETHICAL RISK

High.
Voice cloning and realistic synthesis can be misused for impersonation or deepfake content. There is no built-in age verification



RISK MITIGATION

Strictly limit use to text-to-speech features for educational narration. Do not allow students to clone voices or upload recordings.



RECOMMENDATION

Use only institution-approved accounts and review outputs before sharing.



GEMS Winchester School, Dubai



Risk Assessment - gamma for Schools *Teacher champion - Not Required*

Used by teachers for:
generating presentations and websites.

USED BY STUDENTS FOR:
Not Used



PURPOSE

Gamma is an AI-powered presentation and document design tool that transforms prompts or outlines into polished slide decks, reports, or webpages..



DATA RISK

Medium.
Users typically need to sign in with a personal or school email. Inputted text is stored and processed to generate outputs. If personal or sensitive information is entered, there is a risk of unintended data exposure.



ETHICAL RISK

Medium.
AI-generated content can occasionally include errors, inaccuracies, or biased phrasing. There is a risk of students submitting AI-generated presentations without engaging in the research or writing process.



RISK MITIGATION

Require content review before submission to check for AI hallucinations or bias. Encourage use for design support rather than content substitution.



RECOMMENDATION

Do not input any personally identifiable or sensitive data.



GEMS Winchester School, Dubai

Risk Assessment - Gemini for Schools

Teacher champion - Ms. Swati



USED BY TEACHERS FOR:

writing, summarising, brainstorming and generating educational resources.

USED BY STUDENTS FOR:

brainstorming



PURPOSE

Google's conversational AI model that integrates with Google Workspace tools. It provides text-based responses to user prompts and can assist with tasks like writing, summarizing, researching, and brainstorming.



DATA RISK

Medium.
Data entered into Gemini may be stored and reviewed for improvement unless users opt out or use a Google Workspace for Education account with AI features managed. Risk increases when personal or sensitive data is input.



ETHICAL RISK

Medium to High.
As with other LLMs, Gemini may generate inaccurate or biased content. It lacks age-specific controls in the consumer version, and its integration with writing tools may raise concerns around plagiarism or over-reliance on AI for assignments.



RISK MITIGATION

Enable Gemini only within Google Workspace for Education with admin controls. Disable access primary students.



RECOMMENDATION

Teach digital literacy, bias awareness, and source verification.



GEMS Winchester School, Dubai

Risk Assessment - grammarly for Schools

Teacher champion - Ms. Aaliya, Ms. Jazeela



USED BY TEACHERS FOR:

Drafting emails, checking grammar, punctuation, tone, and clarity.

USED BY STUDENTS FOR:

Supporting with writing



PURPOSE

Grammarly is an AI-powered writing assistant that helps users with grammar, punctuation, tone, and clarity. Grammarly offers browser extensions, desktop apps, and integrations with platforms like Google Docs and Microsoft Word.



DATA RISK

LMedium to High. Grammarly processes all text entered by the user through its servers, which raises concerns about storing sensitive or personally identifiable information, especially if students enter personal content.



ETHICAL RISK

Medium. Students may become overly dependent on Grammarly for corrections and style suggestions, potentially reducing independent editing and learning. Can be misused for assignment completion.



RISK MITIGATION

Avoid submitting sensitive or personal reflections through the platform. Discuss ethical AI use and responsible authorship in classroom policy.



RECOMMENDATION

Use Grammarly EDU or business plans that include data privacy controls.



GEMS Winchester School, Dubai

Risk Assessment - MagicSchool.ai

Teacher champions - Mr. Terrence & Mr. Abraham



USED BY TEACHERS FOR:
supporting and challenging students in classrooms
and designing learning materials.



USED BY STUDENTS FOR:
for AI guided learning during lessons.



PURPOSE

AI-enabled tools for lesson planning, creating rubrics, and giving feedback to students.



DATA RISK

Low-medium. Uses OpenAI's model but opts out of sharing user data for training. Warns users not to share PII and claims to delete PII if inadvertently entered.



ETHICAL RISK

Low-medium. Generally creates relevant content. Does not have explicit age-controls but requires users to be 18+ as per terms of service. Includes some filtering for malicious or inappropriate prompts.



RISK MITIGATION

Even though MagicSchool treats personal identifiable information exposure seriously, users should double-check all prompts and filter any identifiable information.



RECOMMENDATION

Magic Student Primary recommended tools:
Quiz me
5 Review questions

Magic Student Secondary recommended tools:
Quiz me
Step by Step
5 Questions



GEMS Winchester School, Dubai

Risk Assessment - Notebook LM for Schools

Teacher champion - Not Required



USED BY TEACHERS FOR:
As a research assistant, creating podcasts.



USED BY STUDENTS FOR:
Not used



PURPOSE

NotebookLM (Language Model) is an AI tool by Google designed to act as a personalized research assistant. It allows users to upload their own documents (e.g., PDFs, Google Docs) and then ask questions or receive summaries based on the uploaded content.



DATA RISK

Medium to High. Since users upload personal documents, there is a significant risk if files contain sensitive student data or copyrighted materials.



ETHICAL RISK

Medium. AI-generated summaries and interpretations could oversimplify, misrepresent, or omit critical information from academic texts. There's also a risk of over-reliance by students, using the tool as a shortcut instead of fully reading material.



RISK MITIGATION

Use only with Google Workspace for Education accounts with privacy and sharing controls. Train students in critical reading and verification of AI-generated notes.



RECOMMENDATION

Do not upload sensitive student information, personal reflections, or copyrighted documents.



GEMS Winchester School, Dubai

Risk Assessment - Pictory for Schools

Teacher champion - Ms. Swati



USED BY TEACHERS FOR:
transforming texts into videos and visual summaries.



USED BY STUDENTS FOR:
Not used by students



PURPOSE

Pictory is an AI video creation platform that transforms text (scripts, blog posts, summaries) into short, engaging videos.



DATA RISK

Medium.
Uploading scripts or files that contain personal or identifiable information poses a moderate risk, especially if student data is embedded in video content. Videos may be hosted on cloud platforms.



ETHICAL RISK

Medium.
AI-generated video content can lead to concerns such as: Over-reliance on visuals that don't match context. Potential exposure to copyright or licensing issues with media assets
No age-specific safeguards are built-in for student use.



RISK MITIGATION

Avoid uploading personally identifiable or sensitive content. Review all AI-generated media for accuracy and appropriateness..



RECOMMENDATION

Use educator or institutional accounts with privacy settings enabled. Pictory is a powerful storytelling and instructional tool when used responsibly. Use it to scaffold learning .



GEMS Winchester School, Dubai

Risk Assessment - PerplexityAI for Schools

Teacher champion - Ms. Swati, Ms. Fatima



USED BY TEACHERS FOR:
Research

USED BY STUDENTS FOR:
developing inquiry and research habits.



PURPOSE

AI-powered search assistant that combines web search capabilities with conversational AI. It provides cited answers in real time and integrates both language model responses and current web results.



DATA RISK

Medium. While minimal personal data is collected when used without logging in, queries are stored and may be analyzed for system improvement. No built in safeguards for students.



ETHICAL RISK

Medium to high. Although sources are cited, the AI can still synthesise or highlight biased or low-quality information. Students may over-rely on it for factual content without verifying the reliability of sources.



RISK MITIGATION

Limit student use to supervised research sessions. Guide students to develop questions suitable for academic inquiry. Avoid student logins; use read-only mode or shared displays.



RECOMMENDATION

Teach students to verify citations and critically evaluate sources.



GEMS Winchester School, Dubai



Risk Assessment - QuillBot for Schools

Teacher champion - Not Required

USED BY TEACHERS FOR:

Sentence revision, grammar practice, ESL writing support, and academic paraphrasing

USED BY STUDENTS:

summarising, grammar checking, and citation generation.



PURPOSE

QuillBot is an AI-powered writing tool that assists with paraphrasing, summarizing, grammar checking, and citation generation. The platform also includes a plagiarism checker and AI-assisted writing modules in its premium version.



DATA RISK

Medium.
User inputs (text for paraphrasing or summarizing) are sent to QuillBot's servers. There's a potential risk if students input identifiable or sensitive content.



ETHICAL RISK

Medium.
Students may misuse QuillBot to bypass the writing process, relying on paraphrasing tools to mask plagiarism. There's also a risk of distorted meaning in paraphrased output or inaccurate citation suggestions, which could affect academic integrity.



RISK MITIGATION

Avoid uploading personal reflections or sensitive material. Incorporate lessons on paraphrasing ethics and proper citation.



RECOMMENDATION

Instruct students to use QuillBot for draft refinement, not full rewriting.



GEMS Winchester School, Dubai

Risk Assessment - Quizizz for Schools

Teacher champion - Ms. Fatima, Ms. Jazeela, Ms. Naziya



USED BY TEACHERS FOR:
conducting assessment for learning



USED BY STUDENTS FOR:
Student only have access through the teacher



PURPOSE

Quizizz is a game-based learning platform that allows educators to create and assign quizzes, polls, and interactive lessons. It is an interactive assessment tool with built-in AI features that help auto-generate and adapt content.



DATA RISK

Low to Medium. When used without student accounts, data risk is low. Teachers must manage permissions and integrations carefully.



ETHICAL RISK

Low. Gamification can sometimes lead to competitive stress or misuse of features like memes or avatars. AI-generated content could include factual inaccuracies if not reviewed. There are no inherent risks if used with guided instruction.




RISK MITIGATION

Encourage use of class codes rather than personal logins for younger students. Use educator-managed classrooms with privacy settings enabled. Monitor class participation to promote positive digital behavior.




RECOMMENDATION

Do not create student account. Teachers should preview and verify all AI-generated questions.



USED BY TEACHERS FOR:
Lesson planning and question generator



USED BY STUDENTS FOR:
Not for student use



PURPOSE

AI-powered teaching assistant to help with lesson planning, content creation, grading support, and teacher workload reduction.



DATA RISK

Medium – May collect user inputs, lesson materials, or assessment-related data, which could include identifiable student information if not anonymized.



ETHICAL RISK

Medium – Risk of bias in AI-generated content, over-reliance on AI for pedagogical decisions, and potential for reduced teacher agency or critical thinking if misused.



RISK MITIGATION

Avoid uploading personal student data or identifiable information. Use with anonymised or synthetic content. Ensure school data protection policies are followed. Prefer use through school-approved accounts or secure portals



RECOMMENDATION

Ensure correct age and curriculum is selected when generating content.